



# GAT MONTHLY MEMBERSHIP PROGRESS REPORT

Results as of: 6/30/2023

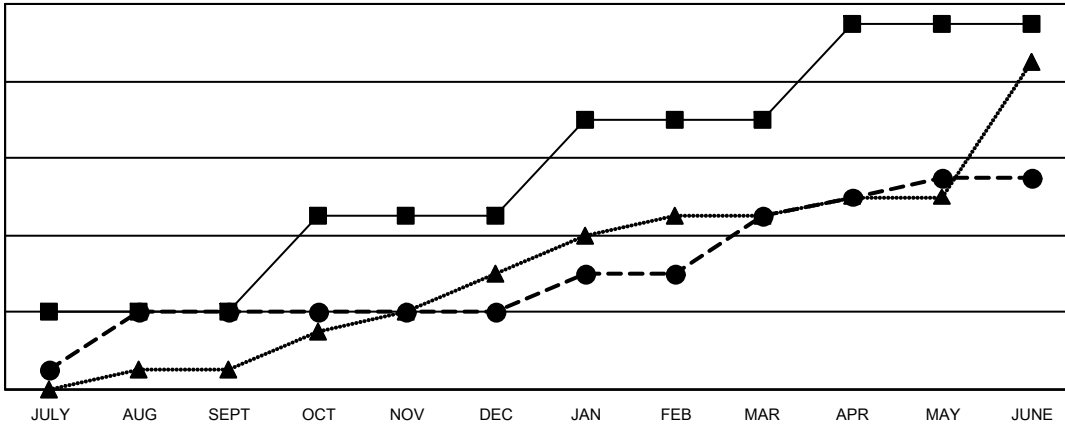
Multiple District 411

LOCATION: KENYA AFRICA

Clubs			
RESULTS FOR 2022-2023			
QUARTER	NEW CLUB GOAL	NEW CLUBS	DROPPED CLUBS
JULY/AUG/SEPT	4	4	1
OCT/NOV/DEC	5	0	9
JAN/FEB/MAR	5	5	2
APR/MAY/JUNE	5	2	10

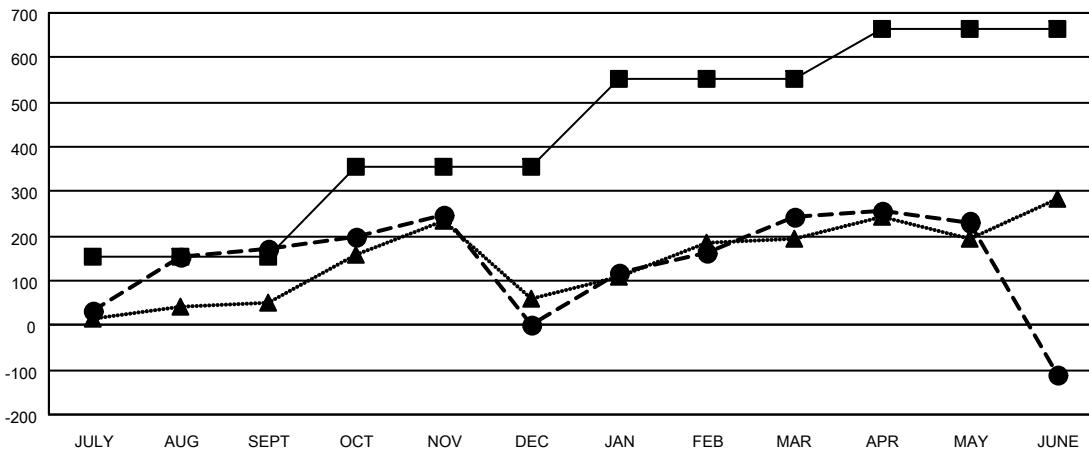
Members			
RESULTS FOR 2022-2023			
QUARTER	MEMBER GROWTH NET GOAL	MEMBER GROWTH ACTUAL	DROPPED MEMBERS ACTUAL (including transfers)
JULY/AUG/SEPT	152	269	95
OCT/NOV/DEC	205	216	382
JAN/FEB/MAR	195	400	117
APR/MAY/JUNE	112	212	548

GOALS AND ACTUAL NEW CLUBS CUMULATIVE



- - CURRENT YEAR GOALS FOR NEW CLUBS
- - CURRENT YEAR ACTUAL NEW CLUBS
- ▲ - LAST YEAR ACTUAL NEW CLUBS

GOALS AND ACTUAL MEMBERS CUMULATIVE



- - MEMBER GROWTH NET GOAL
- - MEMBER GROWTH ACTUAL
- ▲ - LAST YEAR MEMBERSHIP ACTUAL

DROPPED CLUBS: 22	110 CLUBS OF 154 ADDED 1 OR MORE NEW MEMBERS	<b>GENDER DISTRIBUTION</b>
<b>DROPPED MEMBERS</b>	<a href="#">CLICK HERE FOR CUMULATIVE MEMBERSHIP DATA</a>	MALE 2,371 (59.54%)
DECEASED 15		FEMALE 1,604 (40.28%)
CLUB CANCELLED 400		NON BINARY 0 (0.00%)
OTHER 727		PREFER NOT TO ANSWER 7 (0.18%)
<b>TOTAL 1,142</b>		<b>TOTAL FAMILY UNIT MEMBERS 1,242</b>
		FAMILY MEMBERS PAYING HALF DUES 768